

# CONSTRUCTION PROGRAMME OVERVIEW



## MOBILE CONSTRUCTION CLASSROOM



Schools choose the Mobile Classroom for those that wish to study and follow a Construction qualification, for students who find mainstream education difficult and need a vocational subject to engage their learning, or to provide practical sessions to students who struggle in their learning.

We bring all that is necessary to teach a practical hands-on construction skills for two hours every week for up to 8-10 students subject to agreement.

Schools can select from: joinery, carpentry, plumbing, bricklaying and electrics. All our practical units include information about the opportunities in the Green Energy economy. We also include learning on Progression Pathways and Careers.

## DELIVERY

7 Fully Equipped Vans: all materials, tools and equipment provided to deliver a 2 hour weekly session

7 Experienced Tutors: with both industry and education experience. All are DBS checked and have annual update training on Safeguarding, Health & Safety and Construction CPD.

SATRO hold approval to deliver the BTEC Level 1 and BTEC Level 1 Introductory Construction Courses. We have a fully developed and approved quality system including assessment, grading and verification.

SATRO also deliver an SEN Practical Skills Certificate

We work with all abilities of student in all educational settings including PRU, SEN, AP and Mainstream.

# CONSTRUCTION PROGRAMME OVERVIEW



## BTEC QUALIFICATION COURSE OVERVIEW

**Aims:** to introduce students to a range of basic skills used in the construction industry through practical assessments using trade tools and materials. The focus is on the development of sector specific and transferable skills for those wishing to gain an introduction to the construction industry.

### Practical Units:

BTEC Level 1 Construction (ends July 2022)	BTEC Level 1 Introductory in Construction
Producing a Timber Product Developing Carpentry Skills Developing Joinery Skills Developing Electrical Installation Skills Developing Plumbing Skills Developing Bricklaying Skills	Making Carpentry Joints Building a Simple Wall Fixing a Water Pipe Making an Electrical Circuit

### Core Skills Units:

BTEC Level 1 Construction (ends July 2022)	BTEC Level 1 Introductory in Construction
Health & Safety Interview Skills	Developing a Personal Progression Plan Being Organised

## ASSESSMENT PLANS

BTEC Level 1 Construction (ends July 2022)	BTEC Level 1 Introductory in Construction
<p><b>Award: 7 Credits (1 Year) QN: 500/6600/6</b></p> <ul style="list-style-type: none"> <li>2 units delivered in an academic year</li> <li>Assessment in February &amp; June</li> </ul> <p><b>Certificate: 13 Credits (2 years) QN: 500/6591/9</b></p> <ul style="list-style-type: none"> <li>4 units delivered across 2 academic years</li> <li>Assessments in February, June</li> </ul> <p><b>Assessment:</b> Pass or Fail</p>	<p><b>Award (1 Year) QN: 603/5132/9</b></p> <ul style="list-style-type: none"> <li>Developing a Personal Progression Plan</li> <li>1 practical unit</li> <li>Practical Assessment in March</li> <li>Core Skills Assessment in May</li> </ul> <p><b>Certificate (2 years) QN: 601/8543/0</b></p> <ul style="list-style-type: none"> <li>Developing a Personal Progression Plan</li> <li>3 practical units</li> <li>Being Organised</li> <li>Practical Assessments March, December, May</li> <li>Core Skills Assessments in May &amp; March</li> </ul> <p><b>Assessment:</b> Fail, Pass, Merit, Distinction</p>

# CONSTRUCTION PROGRAMME OVERVIEW



## OUTCOMES

SATRO have been running the construction programme for over 15 years and annually have around 350 students studying with our seven tutors in schools across the South East.

In 2021 we awarded 135 BTEC level 1 qualifications and supported a further 20 in achieving their Level 2 qualifications through their schools. Teaching continued in-person through lockdown for vulnerable students and was provided remotely during school lockdowns. In addition we were able to support a further 50+ students as part of our SATRO Award scheme.

Feedback included:

"A wonderful opportunity to students to engage in a meaningful programme that develops them both socially and academically. The SATRO construction course offers students real currency and enables them to succeed practically, setting them up as desirable candidates to progress onto college courses and apprenticeships. This is what vocational education should be!" Assistant Head July 2021

In 2019 case studies showed individual and group experiences:

*"We have had an excellent cohort this year, where all the students that have completed the course are signed up for course in aspects of construction at college next year. This includes everything from joinery to site management."* Deputy Headteacher, Mainstream School

*"Alex has significant difficulties in his learning.... he has thoroughly enjoyed the SATRO course and has been so enthused by it that he is leaving us to attend Reading College to study a Level 2 Diploma in Plumbing."* Headteacher SEN School

*"Their range of practical skills has improved and broadened, and they have been able to identify trades that they particularly enjoyed and were interested in..... This year's leavers include those that intend to go on to: manufacturing engineering, plumbing apprenticeship, carpentry and electrical courses at college."* Head of Extended Learning, Mainstream School

## PROGRESSION

Students who study the Level 1 course have a range of pathways open to them:

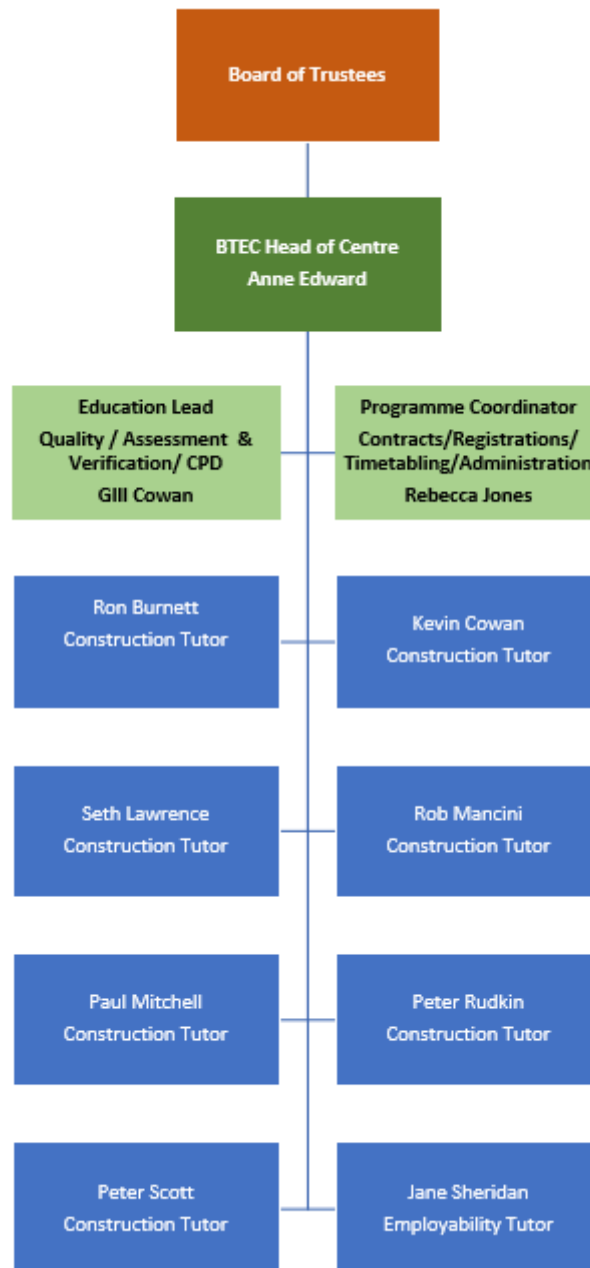
- Vocational Level 2 Trade Skill course at College
- Apprenticeship
- T-Level
- Traineeship

The industrial training body CITB latest estimates for how many new construction workers need to be recruited by the industry is 217,000 over the five years from 2021 to 2025 after accounting for productivity gains and changes in the workload mix. (RIBA Journal 18 June 2021)

# CONSTRUCTION PROGRAMME OVERVIEW



## CONSTRUCTION TEAM



SATRO's Board of Trustees include representatives of the Construction Industry.

## SATRO HEAD OFFICE

Surrey Technology Centre, Occam Road, Surrey Research Park, Guildford, GU2 7YG

Tel: 01483 688070

Web: [www.satro.org.uk](http://www.satro.org.uk)

# CONSTRUCTION PROGRAMME OVERVIEW



## POLICIES

### Charity Policies

- Safeguarding
- Health & Safety & Risk Assessments
- Equality & Diversity
- Data Protection
- Recruitment (including safer recruitment)
- Online Provision
- Complaints Policy
- Volunteer Policy

### BTEC Policies

- Quality Process
- Registration & Certification
- Assessment
- Internal Verification
- Learner & Malpractice
- Appeals

## PUBLIC LIABILITY INSURANCE



### Certificate of public and products liability insurance Surrey Satro

#### Certificate of public and products liability insurance

**Insured name:** Surrey Satro

**Address:** Unit 30B, Surrey Technology Centre  
40 Occam Road, Surrey Research Park  
GUILDFORD  
Surrey

**Postcode:** GU2 7YG

**Policy number:** PL-PSC04001794919/05

**Insurer:** Hiscox Insurance Company Limited

**Period of insurance:** From 08/02/2021 to 05/02/2022 both days inclusive.  
This policy is a Continuing cover policy

**Limit of indemnity:** £5,000,000  
each and every claim or loss, excluding defence costs and criminal proceedings costs.

Signed on behalf of Hiscox Underwriting Limited as agent for the insurers

**Bob Thaker**  
CEO, Hiscox UK

Note: this certificate is for information purposes only and does not contain the full terms, conditions and exclusions of the insurance cover and does not constitute a contract of insurance.